

NetStation Corporate

User's Guide



Contents

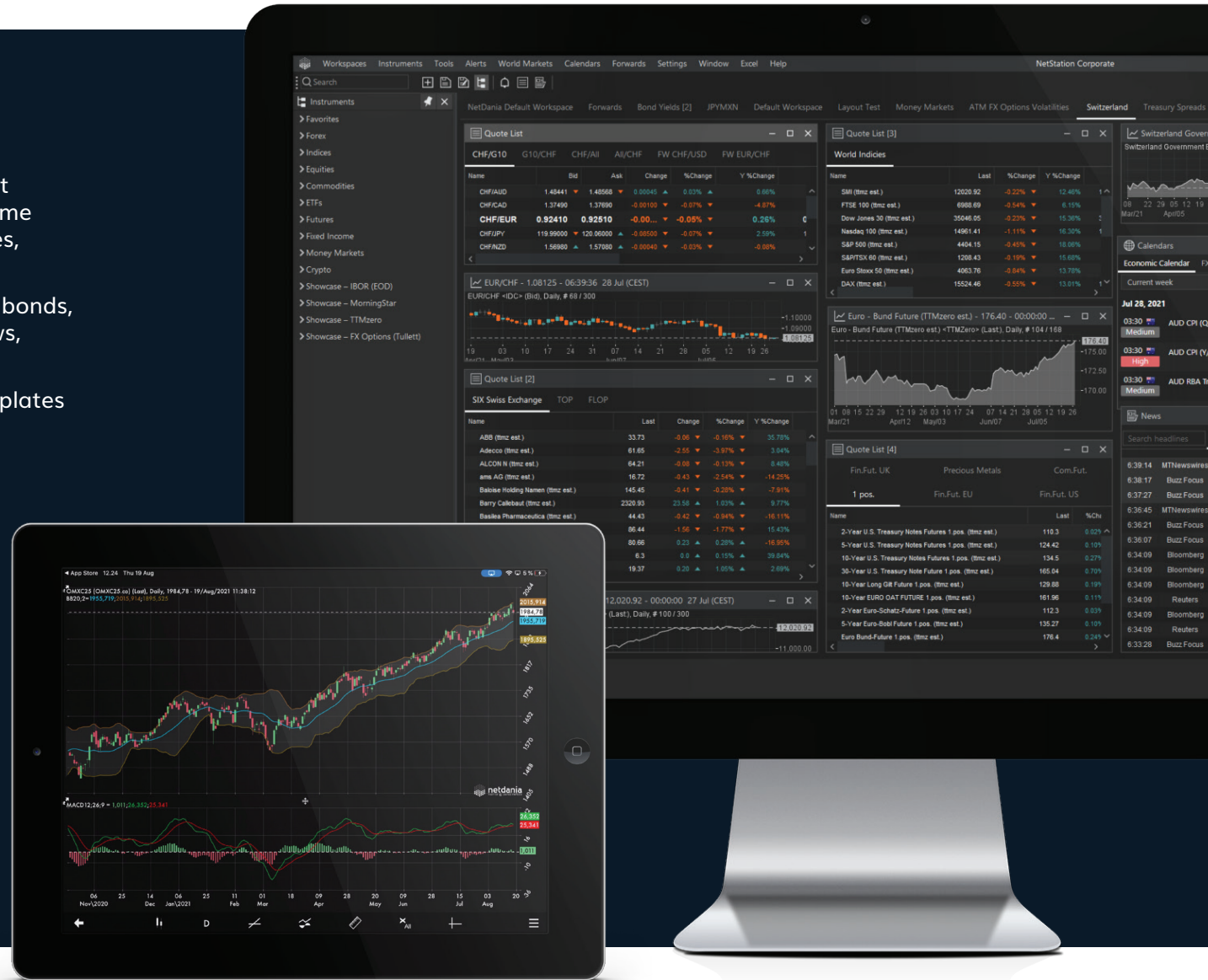
1. Welcome	3		
2. Introduction	4		
2.1 Getting started	4		
2.1.1 Starting up	5		
2.1.2 Predefined workspace	5		
2.1.3 Menu bar	6		
2.1.4 Toolbar	6		
2.2 Mobile apps	7		
2.3 Support	8		
3. The user interface	9		
3.1 Main menu – General menu options	9		
3.1.1 Workspaces - Common actions	9		
3.1.2 Instruments – Common actions	9		
3.1.3 Tools	10		
3.1.4 Alerts	13		
3.1.5 Calendars	19		
3.1.6 Forwards	20		
3.1.7 Settings	21		
3.1.8 Excel Add-in	24		
3.1.9 Help	24		
3.2 Main menu – Chart menu options	25		
3.2.1 Chart type	25		
3.2.2 Timescale	25		
3.2.3 Edit	26		
		3.2.4 Lines	26
		3.2.5 View	27
		3.2.6 Studies	28
		3.3 Toolbar – General toolbar options	29
		3.4 Toolbar – Chart toolbar options	30
		3.5 Right-click menus	31
		3.5.1 Workspace	31
		3.5.2 Instrument Explorer	31
		3.5.3 Chart	32
		3.5.4 Quote List	33
		3.5.5 News	34
		3.5.6 Alerts	34
		3.5.7 Lines	34
		3.5.8 Studies	34
		3.6 Drag & drop	35
		3.6.1 Workspace	35
		3.6.2 Chart	35
		3.6.3 Quote	36
		3.6.4 Quote List	36
		3.6.5 Excel	36
		3.7 Bottom Bar options	37
		3.7.1 Notification panel	37
		3.7.2 NetDania Connected icon	37
		3.7.3 Account options	37

1. Welcome

Welcome to NetStation, where you will have instant access to the latest economic data releases, real-time pricing and history on FX Spot pricing, forward rates, global indices, futures & equities.

Included is also pricing and history on government bonds, treasury spreads, money markets, professional news, forwards calculator, excel add-in, and much more.

You also will be able to save your work, create templates and workspaces, set up alerts.



2. Introduction

2.1 Getting started

Check out our [Getting Started Video](#). It'll walk you through how to get set up and covers the basics of using NetStation.

In case you need technical assistance, please do not hesitate to contact us at qa@netdania.net.

For additional details regarding the platform's usability or opt-in content, feel free to contact our account management team at sales@netdania.net.



Video
Tutorial 



2. Introduction

2.1.1 STARTING UP

There are two types of NetStation accounts:

- **NetStation User** - has access to his own NetStation account only.
- **NetStation SuperUser** - has access to his own NetStation account and also at the same time can manage, through Alert Central, alerts (see/move/add/remove) for all company users.

In addition, the SuperUser can configure the predefined workspaces that will be available to other company users. This feature is available only for a company with more than one NetStation user.

The first time starting the app you will see the NetStation Sign In window. Enter your e-mail address and password and select Sign In.



2.1.2 PREDEFINED WORKSPACE

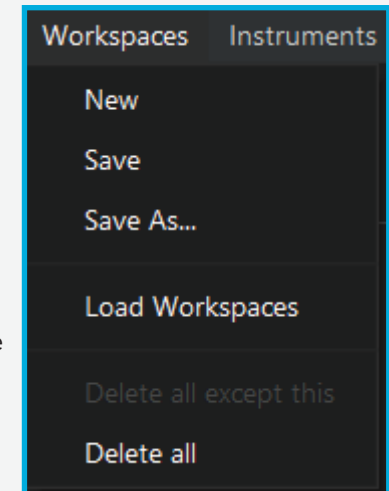
After your first login, the app will load the NetDania predefined workspace. You can create/save/load workspaces by accessing the Workspaces option from the top menu bar.

"Save workspace as template"

Note: As a SuperUser you will additionally have the option to "Save workspace as template", meaning that your current workspace will be saved as an available predefined template that other users within the company can also use.

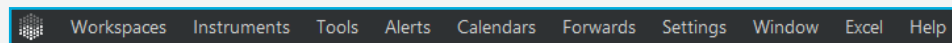
"Load Workspaces"

By selecting to Load Workspaces you will be able to load either one of the NetDania predefined workspaces or a workspace that was previously saved as a template by one of the SuperUsers.



2. Introduction

2.1.3 MENU BAR

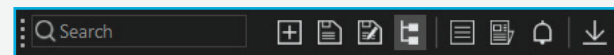


The platform offers by default a menu bar consisting of the following tabs:

- **Workspace** – you may administrate the workspaces from here: create new, open, save, delete;
- **Instruments** – access the Instrument Explorer;
- **Tools** – include different tools within the active workspace;
- **Alerts** – includes Alert Central and the possibility of adding a New Alert;
- **World Markets** – opens a QuoteList containing rates (delayed or real time) for major equities market indices all over the world;
- **Calendar** – opens a new calendar window;
- **Forwards** – opens the Broken Date Calculator which is a special tool allowing users to calculate the expected forward rate for a chosen currency pair on a specific date. For the same pair three different rates, on different dates, can be calculated at the same time.
- **Settings** – general settings for the platform: look & fill, language, time zone, protocol;
- **Window** – windows management;
- **Excel** – possibility to retrieve data from platform to an Excel sheet; it includes Launch Excel and Help;
- **Help** – terms and conditions, about.

If a chart window is selected, several other options are displayed within the Menu bar: Chart Type, Time Scale, Edit, Lines, View Studies.

2.1.4 TOOLBAR



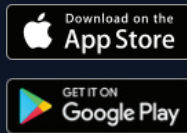
The Toolbar is placed below the Menu Bar and consists of a limited set of icons corresponding to the most used tools of the application. Same as the menu bar, the number of displayed icons is different depending on the active window.

2. Introduction

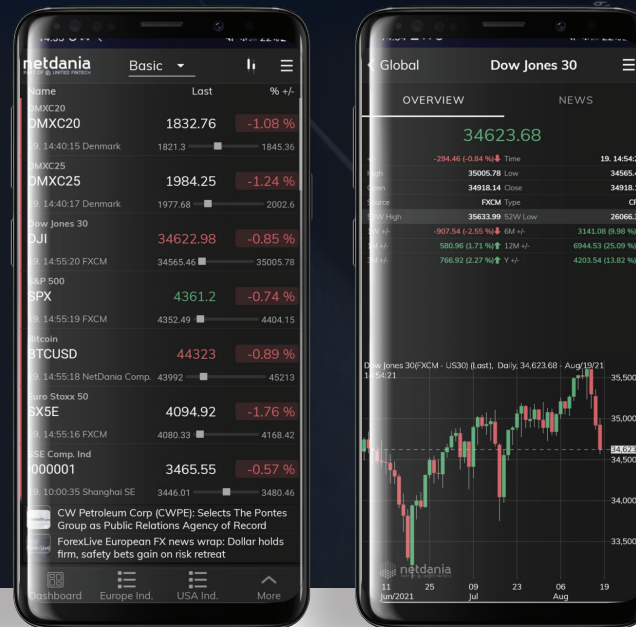
2.2 Mobile apps

With the same credentials you use to log into the NetStation terminal you have access also to our mobile apps for iOS and Android.

NetDania Mobile



Available for
iOS (iPhone / iPad) or Android

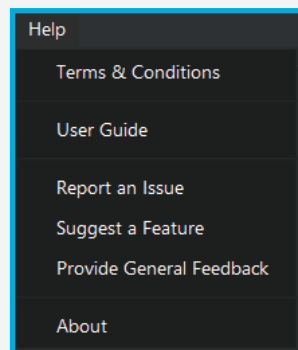


2. Introduction

2.3 Support

Contact Customer support.

If you are experiencing issues or if you have questions/suggestions you can contact us directly from the terminal by accessing the Help option on the top menu bar.



3. The User Interface

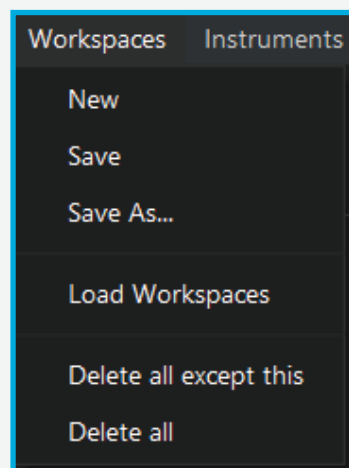
3.1 Main menu – General menu options

3.1.1 WORKSPACES - COMMON ACTIONS

By Workspace we are referring to the customizable space where you can open multiple charts, add quotes, create QuoteList and use any other tools available within the app.

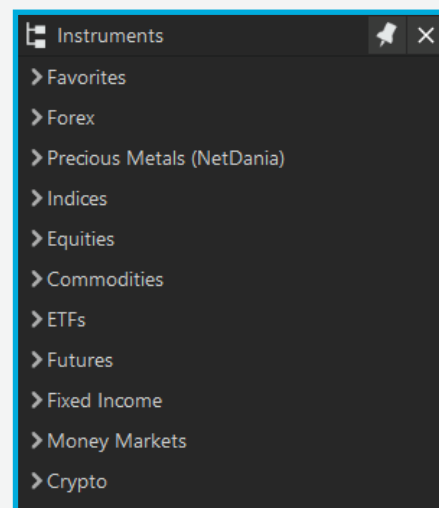
Within the Workspace menu you have the following options:

- **New** - create new workspace;
- **Save/Save As...** - save the created workspaces
- **Load Workplaces** - open the existing workspaces that were previously closed or deleted (if it was one of the predefined workspaces)
- **Delete all except this/Delete all** - delete the workspaces



3.1.2 INSTRUMENTS – COMMON ACTIONS

The Instrument Explorer panel will display all the instruments available within NetStation. The instruments are grouped by categories and you can expand / collapse each category in order to display the corresponding instruments.

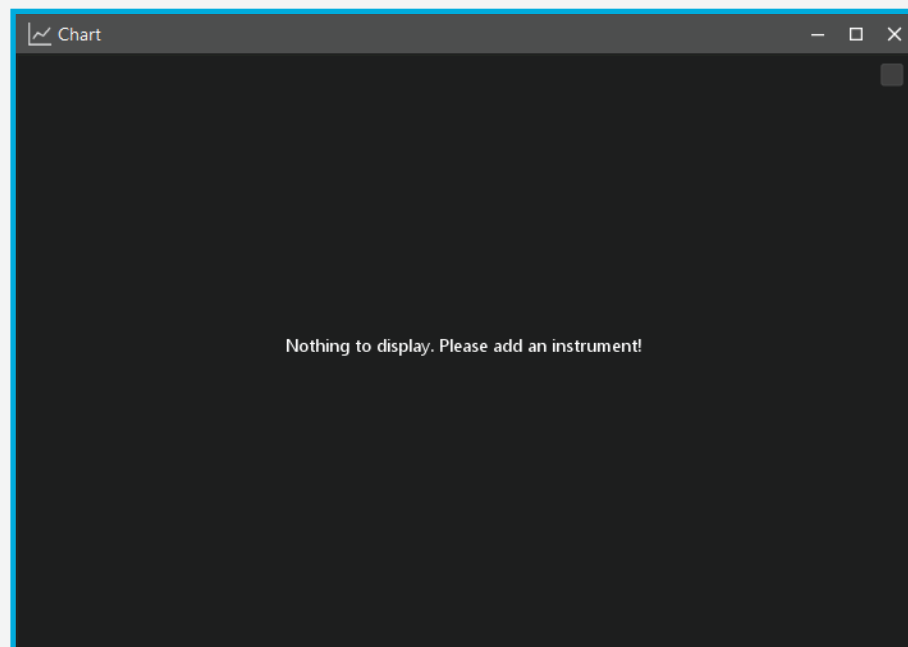


3. The User Interface

3.1.3 TOOLS

3.1.3.1 Chart

Opens a new chart window, where you will be able to add a new instrument. You can drag and drop any instrument to the Chart window in order to see the instrument chart.



3.1.3.2 Quote

Selecting Quote from the Tools menu will display a new quote details window. You can drag and drop any instrument to the Quote window in order to see the quote details for that instrument.

The screenshot shows a window titled '\$ EURUSD <NetDania rt>' with a dark background. It displays market data for EURUSD. The 'Last' price is 1.19405, with a 'Change' of 0.00042 (0.04%). The window includes tabs for 'Overview', 'Stats', 'Trades', and 'History'. Below the tabs is an 'Orderbook labels.ov...' section with a 'Time: 14:32:01' indicator. The orderbook table shows bid and ask prices and sizes. Below the orderbook is a 'Trades' section with a table of market data.

MM #	B. size	Bid	Ask	A. size	MM #
--	--	1.19405	1.19407	25	--
--	--	--	--	--	--
--	--	--	--	--	--
--	--	--	--	--	--

Trades		Bid/Ask	
Open	1.19363	Bid	1.19405
High	1.19496	Ask	1.19407
Low	1.19111	Bid Change	0.00
Prev. Close	1.19363	Previous Bid	1.19405
Last	1.19405	Bid/Ask Spread	0.00%
Change	0.00042 0.04%	O/N Bid	N/A
Open Change	0.00042 0.04%	O/N Ask	N/A
Avg. price today	N/A	S/N Bid	N/A
Contributor	FOREX	S/N Ask	N/A
		T/N Bid	N/A
		T/N Ask	N/A

3. The User Interface

3.1.3 TOOLS

3.1.3.3 QuoteList

Creates a new empty quotelist. You can add instruments to the quotelist by using the Add Quote option or by using drag and drop.

Name	Bid	Ask	Change	%Change	YTD %Ch...	High	Low
EUR/USD	1.19487	1.19490	0.00124 ▲	0.10% ▲	-2.03%	1.19518	1.19110

+ Add Quote

3.1.3.4 News

Displays the News window. Here you can search for specific news headlines, set news headlines alerts and by accessing the Settings tab you can select from the list of available sources the news sources that you would like to receive news from.

News

Search headlines | News | Search | Alerts | Settings

General Settings

Sound for flashes: Sound On

Default search date interval: 1 week

Monitoring Sources

Available sources: Buzz (Other)

Selected Sources: Economic Events, MT Newswires, Buzz Focus (FX & Global), Bloomberg Finance

Open story:

News Source	Open story in:
Reuters Finance	new window
Buzz (Other)	new window
Buzz Focus (FX & Global)	new window
Economic Events	new window
MT Newswires	new window
Bloomberg Finance	new window

3. The User Interface

3.1.3 TOOLS

3.1.3.5 World Markets

Displays a predefined Quotelist containing rates (delayed or real time) for major equities market indices all over the world.

Name	Last	%Change	Change	High	Low	Time	Open	52 W High	52 W Low	YTD %Ch
Dow Jones 30 (tt...	33952.05	0.23 % ▲	77.14 ▲	34039.60	33751.30	22 - 23:00:47	33874.98	35102.71	29615.05	11.76 %
S&P 500 (rt ttmz e...	4248.31	0.53 % ▲	22.58 ▲	4257.07	4219.79	22 - 23:00:47	4225.79	4259.27	2995.93	13.89 %
Nasdaq 100 (ttmz ...	14270.52	0.91 % ▲	129.13 ▲	14290.74	14131.88	22 - 23:00:47	14131.88	14290.74	9748.93	10.92 %
S&P/TSX 60 (ttmz ...	1209.25	-0.28 % ▼	-3.41 ▼	1211.83	1207.08	22 - 22:55:20	1211.32	1227.64	1024.48	15.76 %
IBOVESPA IBO (tt...	126938.28	0.34 % ▲	430.09 ▲	127119.69	126661.06	21 - 15:12:48	127083.01	130280.77	115479.82	N/A
FTSE 100 (ttmz est.)	7109.09	▲ 0.27 %	19.13 ▲	7121.49	7080.21	23 - 14:44:45	7091.38	7198.89	6291.16	7.98 %
DAX (ttmz est.)	15531.33	▼ -0.74 %	-116.50 ▼	15673.86	15507.83	23 - 14:44:46	15664.36	15801.62	11446.85	13.06 %
CAC 40 (ttmz est.)	6568.45	▼ -0.80 %	-53.23 ▼	6621.42	6560.14	23 - 14:44:45	6617.76	6687.36	5314.14	17.98 %
Euro Stoxx 50 (ttm...	4091.02	▼ -0.87 %	-35.75 ▼	4133.19	4085.35	23 - 14:44:46	4129.94	4166.16	2917.23	14.54 %
BEL 20 (ttmz est.)	4135.5	▼ -0.53 %	-22.0 ▼	4157.5	4133.0	23 - 14:42:37	4154.5	4240.5	3511.5	12.84 %
SMI (ttmz est.)	11958.84	▼ -0.21 %	-25.33 ▼	11988.88	11940.36	23 - 14:44:43	11974.55	12067.99	9499.04	11.88 %
IBEX 35 (ttmz est.)	8998.1	▲ -0.77 %	-69.5 ▼	9090.4	8989.0	23 - 14:44:43	9077.6	9313.7	7672.1	10.06 %
AEX	726.95	▼ -0.23 %	-1.64 ▼	732.18	726.60	23 - 14:29:45	731.57	736.07	527.86	16.38 %
PSI 20	5044.5	▼ -0.61 %	-30.9 ▼	5086.9	5042.9	23 - 14:29:00	5082.1	5324.8	3820.7	2.98 %
FTSE MIB	25135.64	▼ -0.95 %	-240.10 ▼	25406.61	25102.91	23 - 14:44:43	25377.32	25940.98	17651.41	12.59 %
Ibex 35	8998.1	▲ -0.77 %	-69.5 ▼	9090.4	8989.0	23 - 14:44:43	9077.6	9313.7	7672.1	10.06 %
WIG 20 (ttmz est.)	2039.57	▼ -0.53 %	-10.78 ▼	2058.77	2035.36	30 - 16:31:24	2058.53	2063.47	1866.91	3.37 %

3.1.3.6 Options

Displays the Options Calculator.

This tool uses either the Black-Scholes or the Garman-Kohlhagen model to calculate call or put options. It is delivering the historical underlying volatility in the market.

You can see more details about how to use the Options Calculator by clicking [here](#).

Options Calculator

Instrument
AUD/CAD

Calculation settings

Type: Call Put

Interpolation method: Nearest Date

Model: Black Scholes

Date settings

Valuation date: 2021-07-23

Expiration date: 2021-07-24

Days to expiration: 1

Current values

Price: 150

Strike price: 152

Risk-free rate: AUD Rates 0.00 %

Yield: CAD Rates 0.00 %

Cost of carry: 0.00 %

Underlying volatility: 1 month 6.53 %

Derivatives calculations

Theoretical value: 0.0000

Delta: 0.0001

Vega: 0.0000

Gamma: 0.0004

Theta: -0.0001

Rho: 0.0000

Omega: 1263.9034

Reset Calculate

3. The User Interface

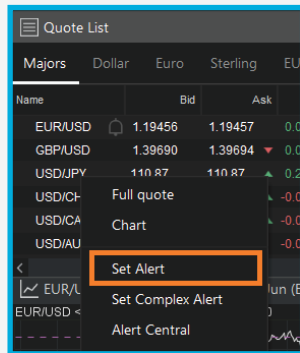
3.1.4 ALERTS

3.1.4.1 Simple alerts

Simple alerts can be set as follows:

1. From within a QuoteList:

Right-click inside the QuoteList on the instrument that you wish to set the alert for -> select **Set Alert**.



2. On the instrument Chart:

- **Set alert on a line:** draw a trend line on chart → Right click the line → select *Set alert on this line*



- **Set alert at level:** Right click on the instrument chart → select *Set alert at level....*



3. The User Interface

3.1.4 ALERTS

3.1.4.1 Simple alerts

2. On the instrument Chart (continued):

After selecting to set a simple alert, as described above, the alert settings window will be displayed allowing you to edit the alert condition and other alert settings.

Alert on EUR/USD (netdania_rtc)

Condition

Current price 1.19412

Bid < 1.19214

Alert me only if the following deviation from line has occurred

0.0001 units Below

Execution

Run once

Expiry date July 1, 2021

Notification

Alert Custom Message

Delete	Recipient Type	Recipient
	netstationdevice	NetStation
	appledevice	Qa's iPhone

Add New Recipient Save as Default Recipients Load Default Recipients

Save Cancel

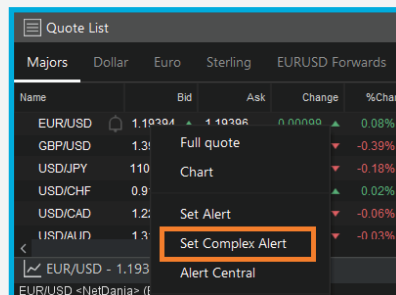
3. The User Interface

3.1.4.2 Complex alerts

Complex alerts can also be set in multiple ways, as described below:

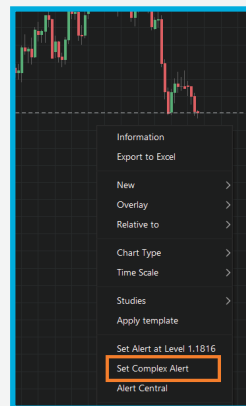
1. QuoteList:

Right click on an instrument from within the QuoteList -> select *Set Complex Alert* "



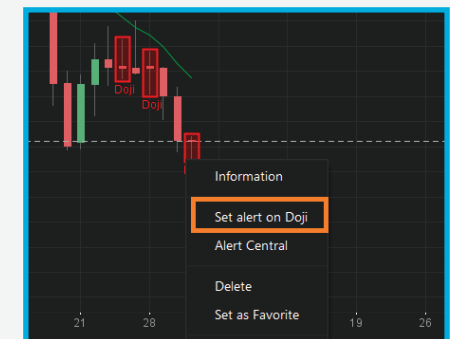
2. Chart:

Right click on the instrument chart -> select to *Set complex alert*



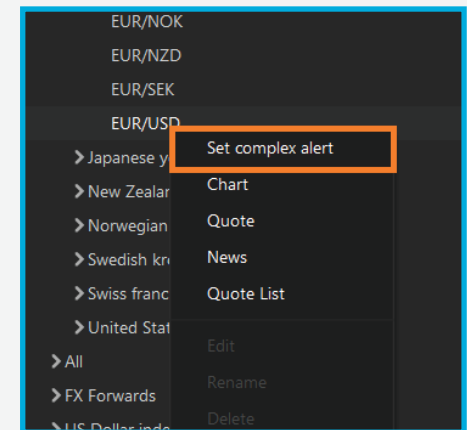
3. Set alert on study value/pattern:

Add a study or a candlestick pattern to the instrument chart → right click the added study/pattern → select *Set complex alert at level*, in order to automatically add an alert condition for when the study reaches a certain level/value.



4. Instruments Explorer:

Right click on an instrument from the Instruments Explorer → select *Set Complex Alert*.

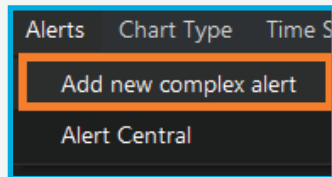


3. The User Interface

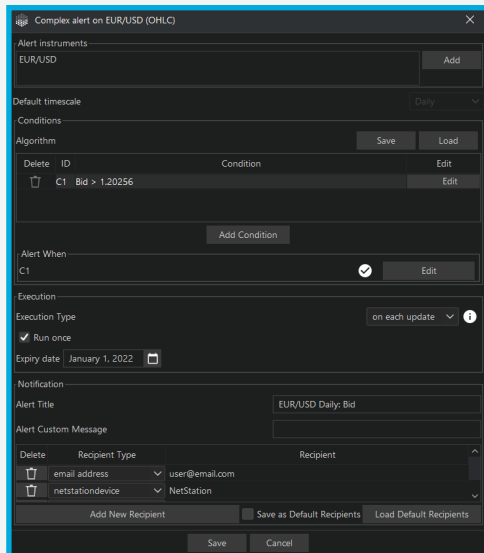
3.1.4.2 Complex alerts

5. Alerts (Within the Menu Bar):

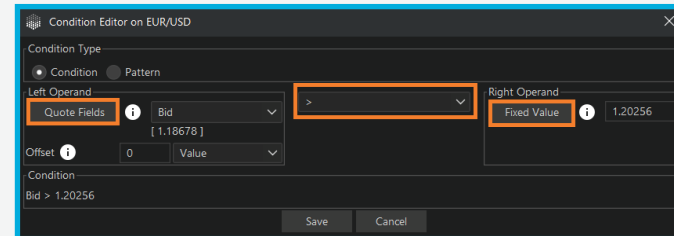
Select *Alerts* → Add new complex alert → the Instrument Explorer window will be displayed allowing you to choose the instrument that you want to set the alert for.



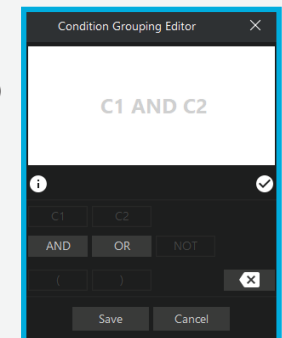
After selecting to place a complex alert as previously described, the complex alert settings window will be displayed.



- **Alert instruments:** select the *Add* button → select the instruments that you would like to add to the alert (an alert can be set for multiple instruments).
- **Conditions:**
 - select *Edit condition* (edit actual condition) → set right and left operands (fixed value, quote fields, chart, functions or studies) → select operator (<, <=, >, etc.)/select Pattern → set parameters → Click *Save*;
 - select *Add Condition* (add new condition) → set condition parameters → Click *Save* → condition is added to Condition list;



- **Alert When:**
 - select *Edit* → Condition Grouping Editor is displayed → set the relation between the conditions (AND/OR) → Click *Save* → alert will be triggered considering the settings.



When using AND both alert conditions need to be true before the alert will trigger, while using OR it means that the alert will trigger when any of the conditions is achieved.

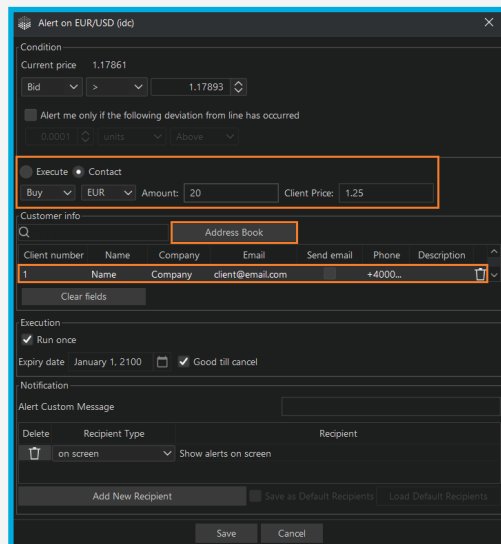
3. The User Interface

3.1.4.2 Complex alerts

5. Alerts (Within the Menu Bar): (continued)

- **Execution:**
 - execution type can be on each update, on bar close and on bar open;
 - alert can run once or can be rearmed at a certain frequency;
- **Notification:**
 - a pop-up with alert title and alert message will be displayed when the alert triggers. Alert recipient can be on screen or email address

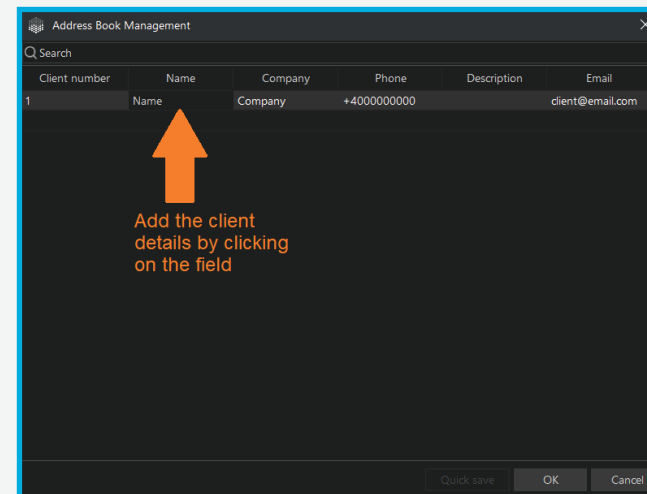
Note: When using only simple math operators (<, >, =, etc.) for various fields (bid, ask, change, etc.) as an operand and a fixed value for the other operand the alert will convert to a simple alert.



Also, as corporate user you have the option to use the Address Book feature, in order to associate the contact details of a client to an alert. This is useful for when a market order needs to be executed at a certain price on the behalf of the client or if the client needs to be contacted at specific market conditions.

When the alert will trigger, the client details will also be received within the alert notification.

You can select the client or add a new client simply by clicking the Address Book button:

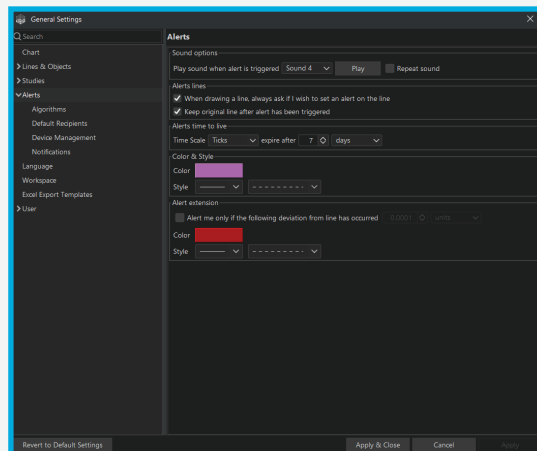


3. The User Interface

3.1.4.3 Alert settings

General alert settings can be edited by selecting Settings from the Menu Bar → General Settings → Alerts:

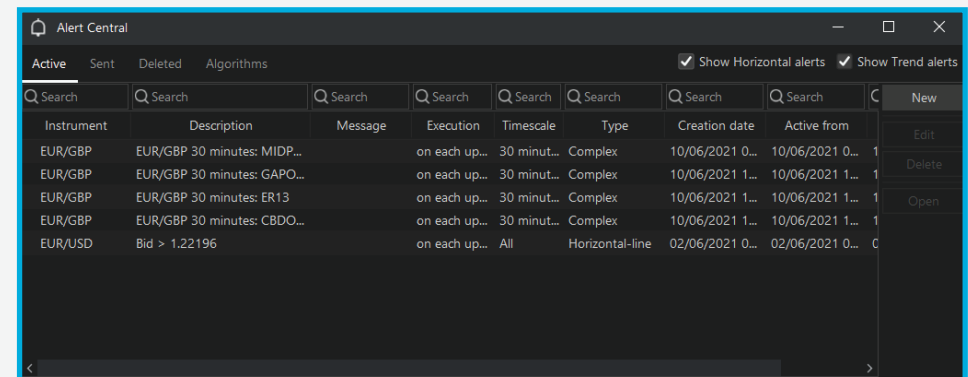
- 1. Default Recipients:** Edit the alert recipients that are used as default when creating a new alert.
- 2. Device Management:** Manage the mobile devices on which you have logged in using the same account as within NetStation.
- 3. Algorithms** (a list of algorithms that can be used as alert conditions when creating a new alert)
 - **“My Private Algorithms”** - algorithms created by the user. Can be edited, set as default, shared with other users or deleted.
 - **“My Shared Algorithm”** - shared algorithms. Can be edited, set as default, shared with other users or deleted.
 - **“Network algorithms”** - predefined algorithms. Cannot be edited or shared.



3.1.4.4 Alert central

You will be able to find all of the previously created alerts, grouped by Active, Sent and Deleted.

Alert Central may be accessed both from the Menu Bar and from the Toolbar:



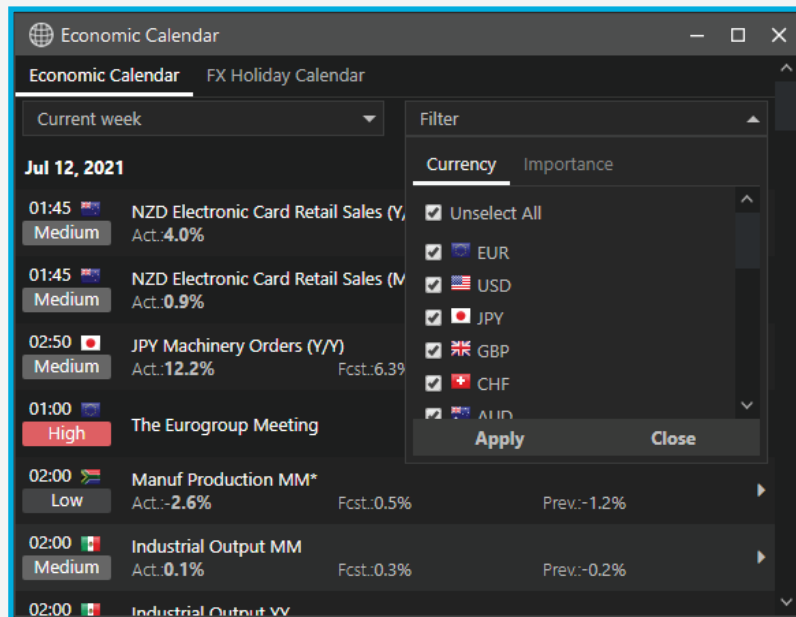
Note: In addition, the SuperUser accounts can administrate all the alerts: transfer them from one account to another, keep track of traders' activity, etc.

3. The User Interface

3.1.5 CALENDARS

3.1.5.1 Economic calendar

Displays past and upcoming economic events.

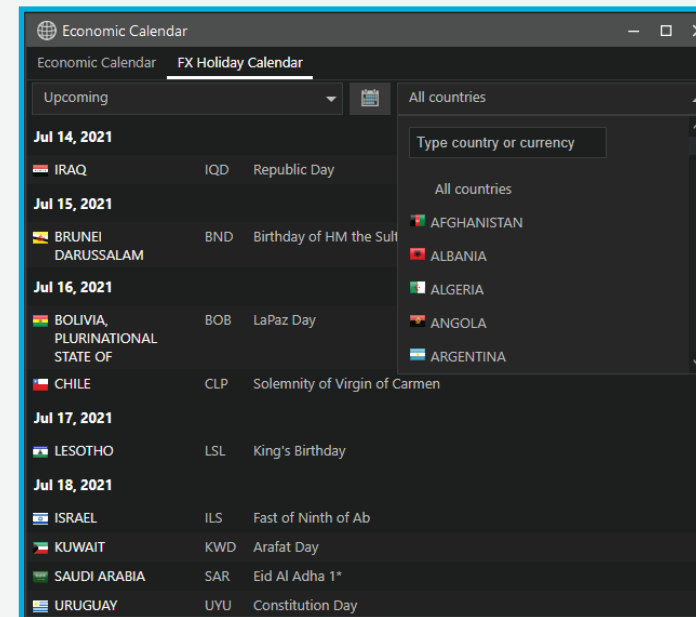


By selecting the Filter dropdown, you will be able to filter the displayed events by currency and the importance of the event.

Important note: The Calendar Time Zone is the one used by your device/PC.

3.1.5.2 FX Holiday

Displays past and upcoming Bank Holidays for each country.



You have the option to filter the events (bank holidays) by a certain date interval and by country/currency.

3. The User Interface

3.1.6 FORWARDS

Displays the Forward Rates Calculator which is a special tool allowing users to calculate the expected forward rate for a chosen currency pair on a specific date.

The Forward Rates Calculator also includes the following additional features:

- Displays forward outright and points for each tenor.
- Allows looking up historical values for these tenors.
- Allows for calculating broken dates.
- Allows for calculating forwards on forwards.
- Features an interactive yield curve / chart.

Days	Dates	Point Bid	Point Ask	Forward Bid	Forward Ask
27	w/e 2021-07-25	6.67	6.83	1.1951667	1.1952827

T	Date	Point Bid	Point Ask	Forward Bid	Forward Ask
ON	2021-06-28	0.660	0.690	1.1944072	1.1945122
TN	2021-06-29	0.218	0.238	1.1944762	1.1945782
SP	2021-06-29	1.19450	1.19460		
SN	2021-06-30	0.225	0.235	1.1945225	1.1946235
1W	2021-07-06	1.95	2.00	1.194695	1.194800
2W	2021-07-13	3.63	3.71	1.194863	1.194971
3W	2021-07-20	5.26	5.34	1.195026	1.195134
1M	2021-07-29	7.37	7.57	1.195237	1.195357
2M	2021-08-30	15.00	15.20	1.196000	1.196120
3M	2021-09-29	22.17	22.33	1.196717	1.196833
4M	2021-10-29	29.57	29.84	1.197457	1.197584
5M	2021-11-29	36.96	37.26	1.198196	1.198326
6M	2021-12-29	44.12	44.92	1.198912	1.199092
7M	2022-01-31	60.20	60.20	1.200520	1.200620
8M	2022-02-28	63.33	65.53	1.200833	1.201153
9M	2022-03-29	70.39	72.89	1.201539	1.201889
10M	2022-04-29	78.44	83.44	1.202344	1.202944

3. The User Interface

3.1.7 SETTINGS

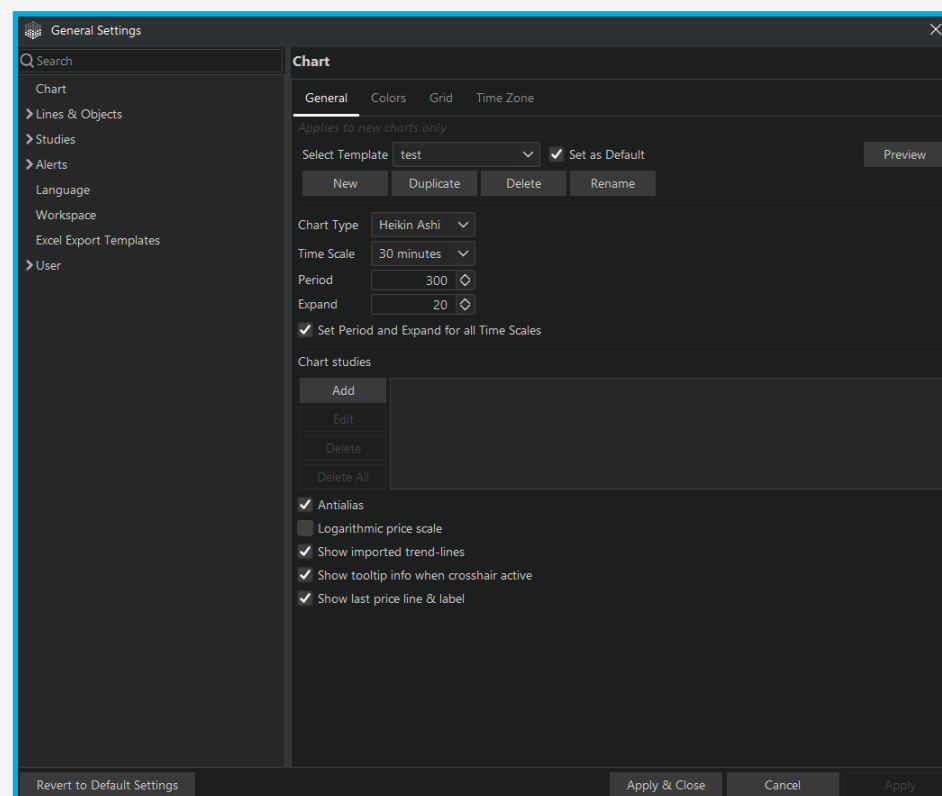
3.1.7.1 General settings

Edit the general settings for: Chart, Lines and Objects, Studies, Alerts, Language, Workspace, Excel Export Templates and User Email Policy.

Also, you have the option to revert to the application default settings. Please note that when doing so all of your current application settings will be lost and the application will use the default settings.

Under the Chart option you will be able to set the default template used when opening a new chart for an instrument and also create additional chart templates. When creating the chart template, you have the option to set the Chart Type, Time Scale, Period (number of the displayed bars) and Studies.

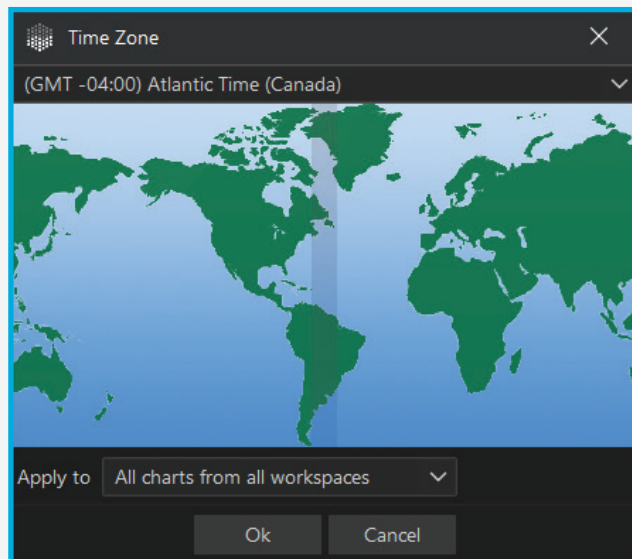
Note: You can apply an existing chart template to an instrument chart by using the chart right click menu and selecting to Apply template.



3. The User Interface

3.1.7.2 Time zone

Set the application Time zone. You have the option to do so for all charts, only the charts within the current workspace or only the currently selected chart.



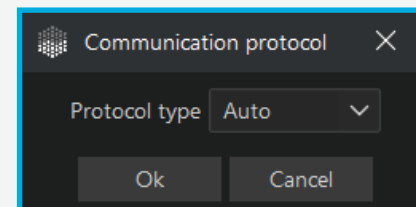
3.1.7.3 Protocol

Change the application connection protocol.

By default, Auto is selected which automatically switches between Streaming and Polling based on the quality of your internet connection.

Streaming - Recommended for users with a high-speed internet connection.

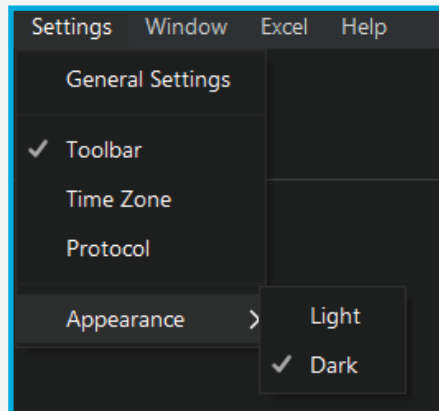
Polling - Recommended for users with a slower speed internet connection.



3. The User Interface

3.1.7.4 Appearance

Change the appearance of the application.



3. The User Interface

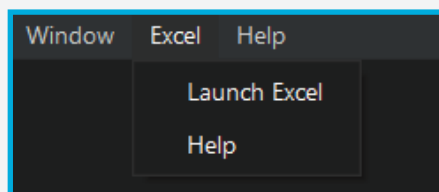
3.1.8 EXCEL ADD-IN

1. Launch Excel

If the NetDania Excel Add-in is not installed on your PC, you will be asked to download and install it. After installation Excel will start automatically.

2. Help

For more details on how to use the Excel feature please see the Excel -> Help section.



3.1.9 HELP

1. Report an issue

Report an error that you are facing within the app. The application logs are also sent automatically together with the report.

2. Suggest a feature

Send us your suggestion regarding the features/improvements that you would like to see within the app.

3. Provide General Feedback

Provide us with general feedback regarding your overall experience while using NetStation.

4. About

General information about NetStation/NetDania.

Also, you can contact us for any kind of inquiries by selecting the E-mail NetDania option.

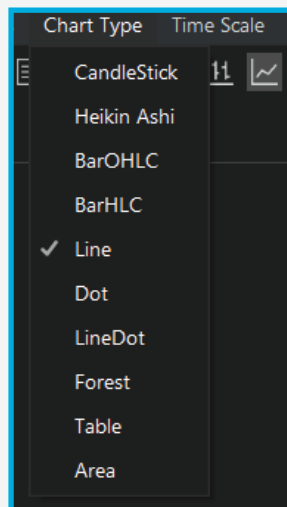
3. The User Interface

3.2 Main menu – Chart menu options

The following options are displayed within the Main menu bar only when a chart is selected within the workspace.

3.2.1 CHART TYPE

Change the Chart Type of the selected chart.

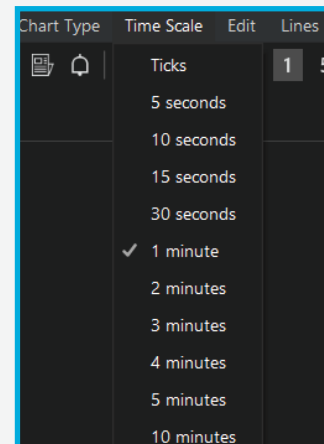


3.2.2 TIMESCALE

Change the Timescale of the selected chart.

Note: The maximum number of points/bars that can be accessed within all of our applications is 1,000 from the current moment regardless of the timescale used (exception from this is the NetDania EUR/USD for which the maximum number of bars that can be displayed is 10,000).

However, we are already working on increasing the number of available bars in the near future.



3. The User Interface

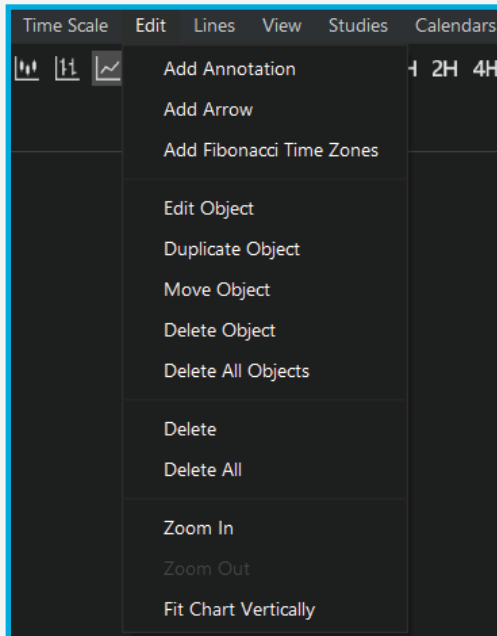
3.2.3 EDIT

You have the option to add Annotation(text), Arrow and Fibonacci Time Zones to the selected chart.

Also, you can edit, duplicate, move or delete the objects that are currently added on the chart.

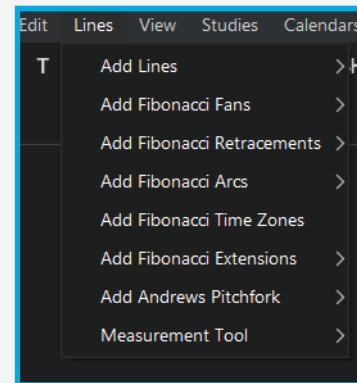
From this menu you can also perform zoom in/out and fit the chart vertically.

Note: You can also perform zoom in/out on a chart by using the mouse scroll wheel.



3.2.4 LINES

Add line drawings to the selected chart.

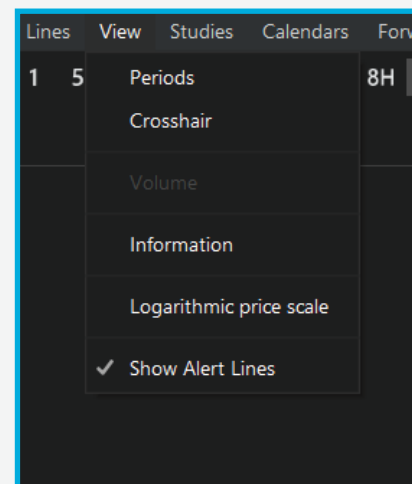


3. The User Interface

3.2.5 VIEW

Edit the selected chart view options:

- **Periods** - set the chart bars(period) that you want to be displayed
- **Crosshair** - displays information available for a certain bar
- **Volume** - volume indicator is displayed. Please note that depending on the data provider, some of the instruments available within our apps do not have any Volume data available
- **Information** - displays all the available information for a selected bar
- **Logarithmic price scale** - please note that on this type of view all objects/ drawings are hidden and no new object can be added
- **Show Alert Line** - when the option is enabled the alerts set on lines are displayed

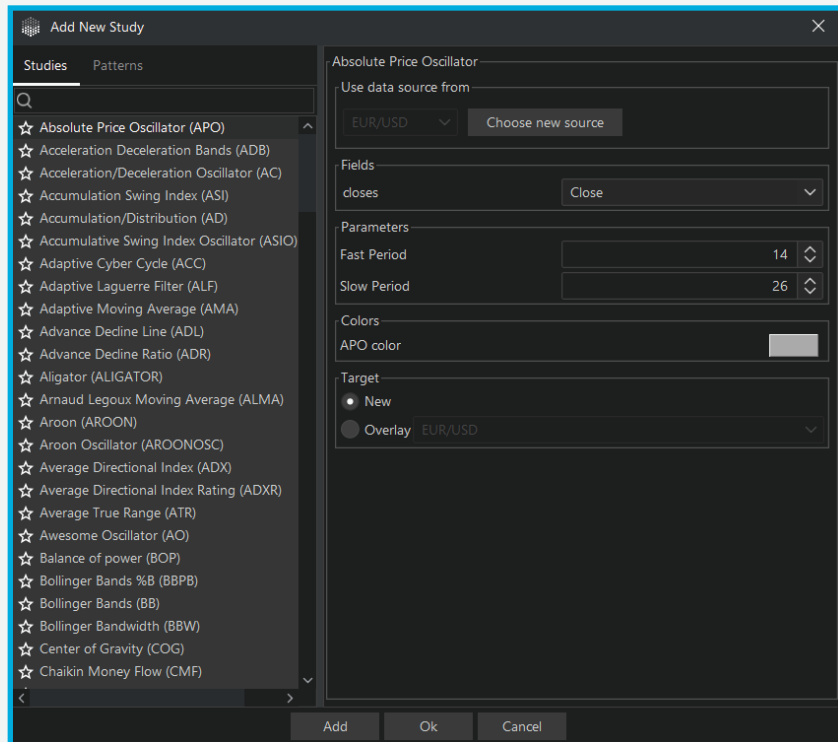


3. The User Interface

3.2.6 STUDIES

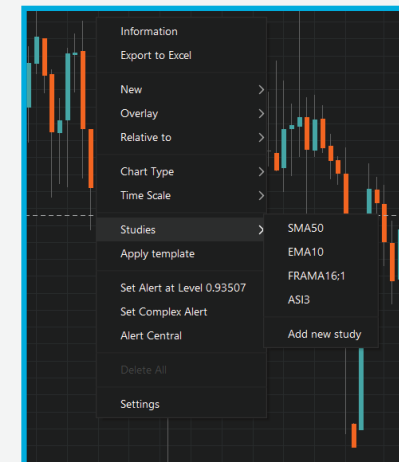
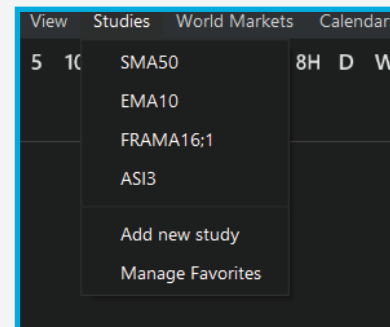
1. Add a new study:

Add new studies (indicators) or candlestick patterns on the selected chart.



You can add a study to Favorites list by selecting the star icon displayed next to each study or you can right click a study that is already added to an instrument chart and select to Set as Favorite.

Please note that after adding a study as favorite you will be able to easy access it directly from the Studies menu and also when right clicking the instrument chart



2. Manage Favorites:

You can edit the studies that you have added as favorites.

3. The User Interface

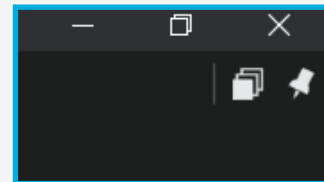
3.3 Toolbar – General toolbar options

The toolbar offers you quick access to some of the most used features:

- Search bar
- Workspaces - New, Save, Save As
- Instrument Explorer
- Alert Central
- Quote List
- News
- Export as XLS (when a Quotelist is selected) - exports the selected quotelist data.



On the far-right side of the Toolbar there are two more options available:



* Bring all to front - use this button in case windows from the active workspace were detached and minimized in the background of the platform. By pressing it, you'll have the window(s) back on the screen. Windows will take their former place once you click on the Attach button on the upper left corner.

* Detach frame - the active window (frame) would be detached from the platform, becoming a stand-alone component. This button may be used also in case you are using NetStation on multiple screens. Detaching a window from within the active workspace will allow you to move it to another monitor.

3. The User Interface

3.4 Toolbar – Chart toolbar options

While the chart is selected more options are displayed within the Toolbar. You can change the chart type, timescale, delete objects, add lines, use measurements tools and more other options, directly from toolbar



You can also group the charts in order to have the same set-up applied on multiple charts at once. In order to do so open charts for multiple instruments -> select Group charts button -> check the charts you wish to apply the same set-up -> make changes (change chart type/timescale/add studies). Changes will be applied on all selected charts.



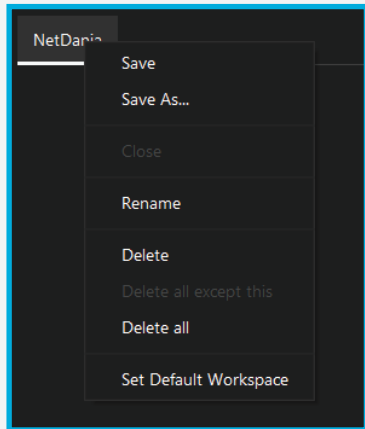
3. The User Interface

3.5 Right-click menus

Export to Excel option is available within QuoteList, Chart and Instrument Explorer right click menus. By selecting this option, you can export the desired data to Excel: select Export to Excel -> set parameters, if necessary -> select Copy to clipboard -> Paste in Excel.

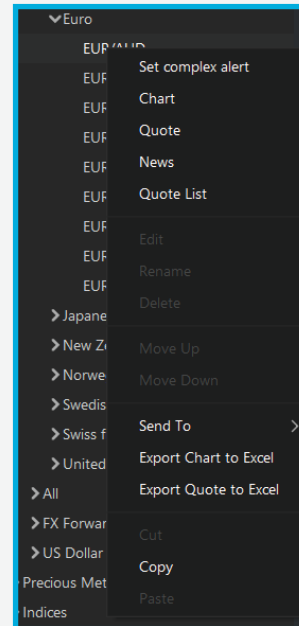
3.5.1 WORKSPACE

Perform right click on an existing workspace tab in order to be able to see the available options. From the right click menu you can save, close, rename or delete the workspace.



3.5.2 INSTRUMENT EXPLORER

In order to be able to see the instrument chart, full quote or another available option related with the instruments please perform right click on the instrument within the Instrument Explorer panel

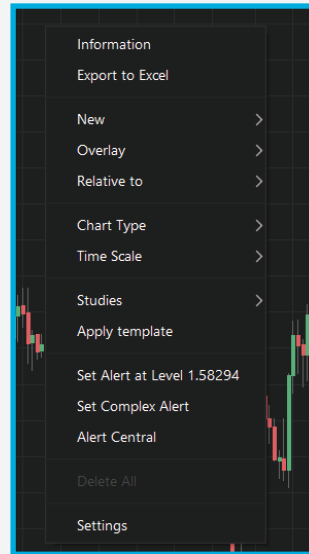


3. The User Interface

3.5.3 CHART

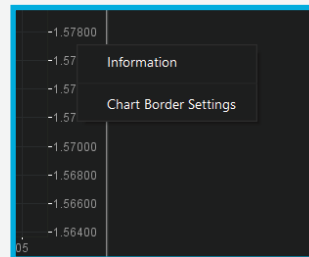
1. Right click on the chart area

Perform right click on chart area in order to see all the available options



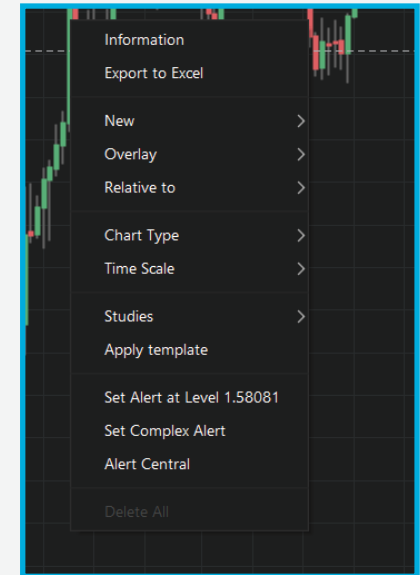
2. Right click on the chart borders (X/Y axis)

By performing right click on the chart border you can activate the information window or access the chart border settings window



3. Right click on the graphic (bars)

If you select the graphic and then perform right click on it you will be able to change the instrument, add another instrument as overlay/related to the existing instrument



3. The User Interface

3.5.4 QUOTE LIST

1. Right click on a QuoteList tab

By performing right click on a quotelist tab all the available options related with the tabs will be displayed.

Quote List				
Majors	Dollar	Euro	Sterling	EURUSD
Name	Add tab			Ask
EUR/U	Rename tab			1.18658
GBP/U	Delete tab			▼ 1.38496
USD/J	Tab options			110.91900
USD/C	Set as default tab			0.92167
USD/C	Restore default tabs			1.23604
USD/A				▼ 1.32830

2. Right click on a QuoteList column

Perform right click on a column within the QuoteList in order to access the Setup Columns window from where you can personalize the displayed columns

3. Right click on an instrument displayed within the QuoteList

By performing right click on an instrument from a quotelist all the available options will be displayed. You can also increase font(s) by selecting Setup -> Setup fonts

Quote List				
Majors	Dollar	Euro	Sterling	EURUSD
Name	Bid			Ask
EUR/USD	1.18632			1.18632
GBP/USD				384
USD/JPY	Full quote			10.9
USD/CHF	Chart			921
USD/CAD				236
USD/AUD	Set Alert			328
EUR/JPY	Set Complex Alert			31.6
EUR/GBP	Alert Central			856
EUR/CHF				093
EUR/CAD	Add Quote			466
GBP/JPY	Delete Quote			53.6
NZD/USD				701
GBP/AUD	Move Up			839
GBP/CAD	Move Down			711
GBP/NOK				1.88
GBP/NZD	Trade View			972
GBP/SEK				1.83
+ Add Quot	Tabs >			
	Setup >			
	Export as XLS			
	Export Chart to Excel			
	Export Quote to Excel			

3. The User Interface

3.5.5 NEWS

If you perform right click on a news displayed within News tab you will have the option to open the news within the same window or in a new window.

3.5.6 ALERTS

If you perform right click on a simple alert (alert added on a line) you will see all the available options for the alert.

3.5.7 LINES

By performing right click on a line added on the chart all the available options for the line will be displayed.

3.5.8 STUDIES

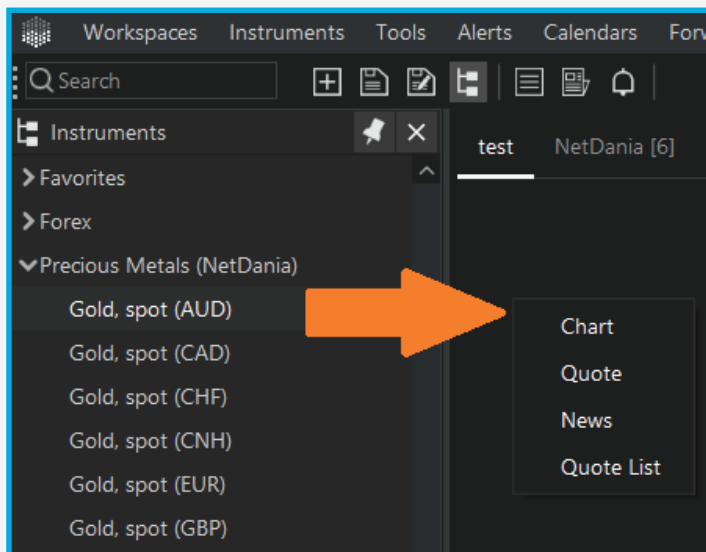
By performing right click on a study added on the chart you will be able to see the available options for the study.

3. The User Interface

3.6 Drag & drop

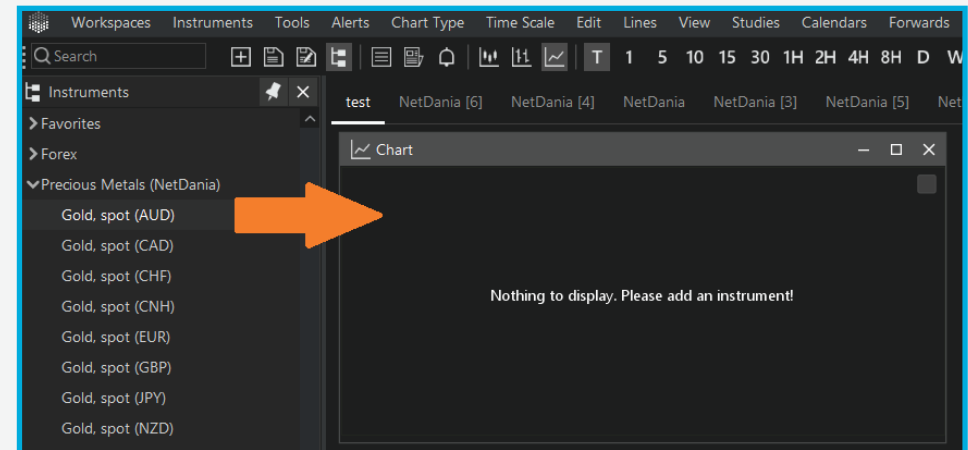
3.6.1 WORKSPACE

After creating a new workspace, you can drag and drop instruments from the Instruments Explorer panel. You have different options in order to open the instrument chart, quote, news window or add the instrument into a quotelist



3.6.2 CHART

After opening the chart window from "Tools" menu, you can drag and drop the desired instrument from Instruments Explorer panel, existing Quote List, Quotes.



Please note that you can also drag and drop new instruments over the existing charts. You will have access to different options by doing so.

3. The User Interface

3.6.3 QUOTE

After opening the Quote window from "Tools" menu, you can drag and drop the desired instrument from Instruments Explorer panel, existing Quote List, Quote, Chart.

3.6.4 QUOTE LIST

After opening the Quote List window from "Tools" menu, you can drag and drop the desired instrument from Instruments Explorer panel, another Quote List, Quote, Chart.

3.6.5 EXCEL

You can drag instruments into Excel from QuoteList, Chart, FullQuote and Instrument Explorer. Also, you can drag multiple instruments or fields by using mouse, Ctrl and Shift.

When dragging from QuoteList you can select which instruments and fields you wish to feed to Excel.

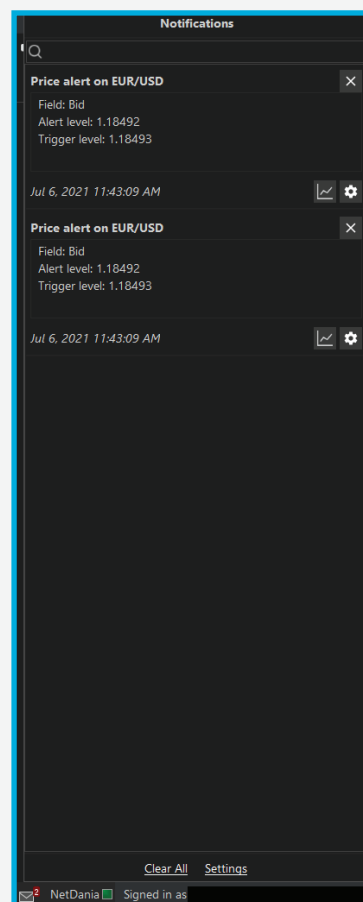
When dragging from Instrument Explorer or FullQuote, you can use templates define which fields shall be inserted into Excel."

3. The User Interface

3.7 Bottom Bar options

3.7.1 NOTIFICATION PANEL

Select the envelope icon in order to see all the received notifications. You will have different options for each notification. By selecting "Settings" you will be directly redirected to the notifications settings from where you can personalize the received notifications.

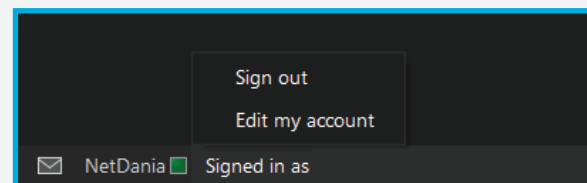


3.7.2 NETDANIA CONNECTED ICON

The green color displayed next to NetDania indicates that you are connected to the NetDania servers, however a red color could mean that there is an issue with your network connection.

3.7.3 ACCOUNT OPTIONS

By selecting "Signed in as" you can sign out from the application. You can also edit your account by selecting "Edit my account" option.



Our FinTech Solutions

NetDania offers a wide range of solutions, including financial workstations and information terminals, trading platforms, charts and applications for both desktop, mobile and website use.

NetDania solutions are feature-rich and cost-efficient through their flexibility and modularity. They come with extensive branding and hosting options.

The NetDania applications include the world's highest user-rated mobile app within finance, and the world's fastest HTML5 chart.

About NetDania

Founded in 1998, NetDania pioneered streaming price technology, and has since delivered solutions to global Tier-1 banks, brokers, currency managers, and analysts.

With a strong position within corporate FX and trading, our technologies are increasingly used by banks, brokerages and analysts as better alternatives to expensive legacy systems for trading, news and analysis.

At NetDania, we take a Scandinavian approach to our work with a keen eye for design and with punctuality and mutual trust as our key values.



United Kingdom
68 Lombard Street
London EC3V 9LJ
United Kingdom
+44 (0) 207 558 8405

Denmark
Højbro Plads 10, 2nd floor
DK-1200 Copenhagen K
Denmark
+45 3698 0409

Australia
+61 2 8003 7177

Hong Kong
+852 8199 0855

United States
+1 312 212 3889

Contact us at
Sales@netdania.net

www.netdania.com